



*Let's shield our surfaces &  
bond our relationships!*

*Product  
Catalogue*

# About us



Welcome to Amco Paints, where colors come to life!

Established in 1992, we take pride in our legacy of providing high-quality paints that transform spaces. At

Amco, we've been at the forefront of innovation, introducing Low VOC (Volatile Organic Compounds) paints to contribute to a healthier and more sustainable environment.

Our commitment to excellence goes beyond aesthetics; it extends to creating products that meet the highest standards of performance while minimizing environmental impact. With a palette of vibrant colors and a dedication to customer satisfaction, Amco Paints is your trusted partner in adding a touch of brilliance to every surface.

Discover a world of possibilities with Amco Paints – where quality, innovation, and environmental responsibility converge to paint a brighter future.

# INDEX

## • PROTECTIVE COATINGS

SHIELD YOUR SURFACES WITH OUR ADVANCED PROTECTIVE PAINTS. ENGINEERED TO WITHSTAND THE TOUGHEST CONDITIONS, THESE COATINGS PROVIDE DURABILITY AND RESILIENCE, ENSURING LONG-LASTING PROTECTION FOR YOUR INFRASTRUCTURE.

## • MARINE PAINTS

NAVIGATE THE SEAS WITH CONFIDENCE USING OUR SPECIALIZED MARINE PAINTS. FORMULATED TO WITHSTAND HARSH MARINE ENVIRONMENTS, OUR COATINGS OFFER SUPERIOR RESISTANCE TO SALTWATER, UV RAYS, AND OTHER CHALLENGING CONDITIONS, ENSURING YOUR VESSELS STAY VIBRANT AND WELL-PROTECTED.

## • DECORATIVE COATINGS

IMMERSE YOUR SPACES IN A WORLD OF COLORS WITH OUR DECORATIVE PAINTS. WHETHER YOU'RE LOOKING FOR TRENDY SHADES OR TIMELESS CLASSICS, OUR PAINTS ARE CRAFTED TO ADD STYLE AND PERSONALITY TO YOUR INTERIORS.

The image is a full-page background photograph of an industrial facility. In the foreground, a complex network of bright yellow structural beams, likely part of a bridge or a large gantry, dominates the lower half of the frame. These beams are arranged in a crisscross pattern, creating a strong geometric structure. In the background, several tall, white industrial smokestacks or chimneys rise into a clear blue sky. The overall scene suggests a large-scale industrial or infrastructure project.

Shield Your World

with our

PROTECTIVE

COATINGS





# ZINC PHOSPHATE PRIMER

- Zinc Phosphate Primer is primarily used as an anti-corrosive primer on iron and steel.
- It can be used for fire escapes, metal gates, metal garage doors and more.
- Zinc phosphate is an excellent method of corrosion resistance, being lighter than other forms of protective plating. Since it can be applied via immersion or using a spray, it can be used with large & small components alike



# ZINC YELLOW PRIMER

- Zinc Yellow Primer is an ideal primer for saline weather and heavily corrosive conditions. It is one of the best zinc primer suitable for mild steel surfaces.
- Zinc Yellow Primer is formulated with a special type of synthetic alkyd binder and micro zinc pigment to withstand high degree corrosion.





# AEROSOLS PAINT

Aerosol paint is useful for **quick, semi-permanent marking on construction and surveying sites**. Inverted cans for street, utility or field marking can be used upside-down with an extension pole.

They are also very popular in Industrial application for maintenance related products.



# **ZINC CHORMET RED OXIDE PRIMER**

Red Oxide Zinc Chromate Primer can be applied over porous materials to smoothen the surface to achieve the best results when subsequent coats are applied. Its anti-corrosion properties eliminate the possibilities of rusty surfaces in ferrous metals.



# **BITUMINOUS ANTI-CORROSIVE PAINT BLACK**

Black Bitumen Paint is general purpose paint for waterproofing and the weather protecting of steelwork and concrete. A solvent based, general purpose, bituminous black paint for waterproofing and weather protecting of steelwork, asphalt, wood and concrete. When dry it forms an odourless and taint-free bitumen film.

Bitumen paint is a durable material that can last a relatively long time. When applied to a felt roof bitumen will usually last 2 to 3 years before it begins to dry out.

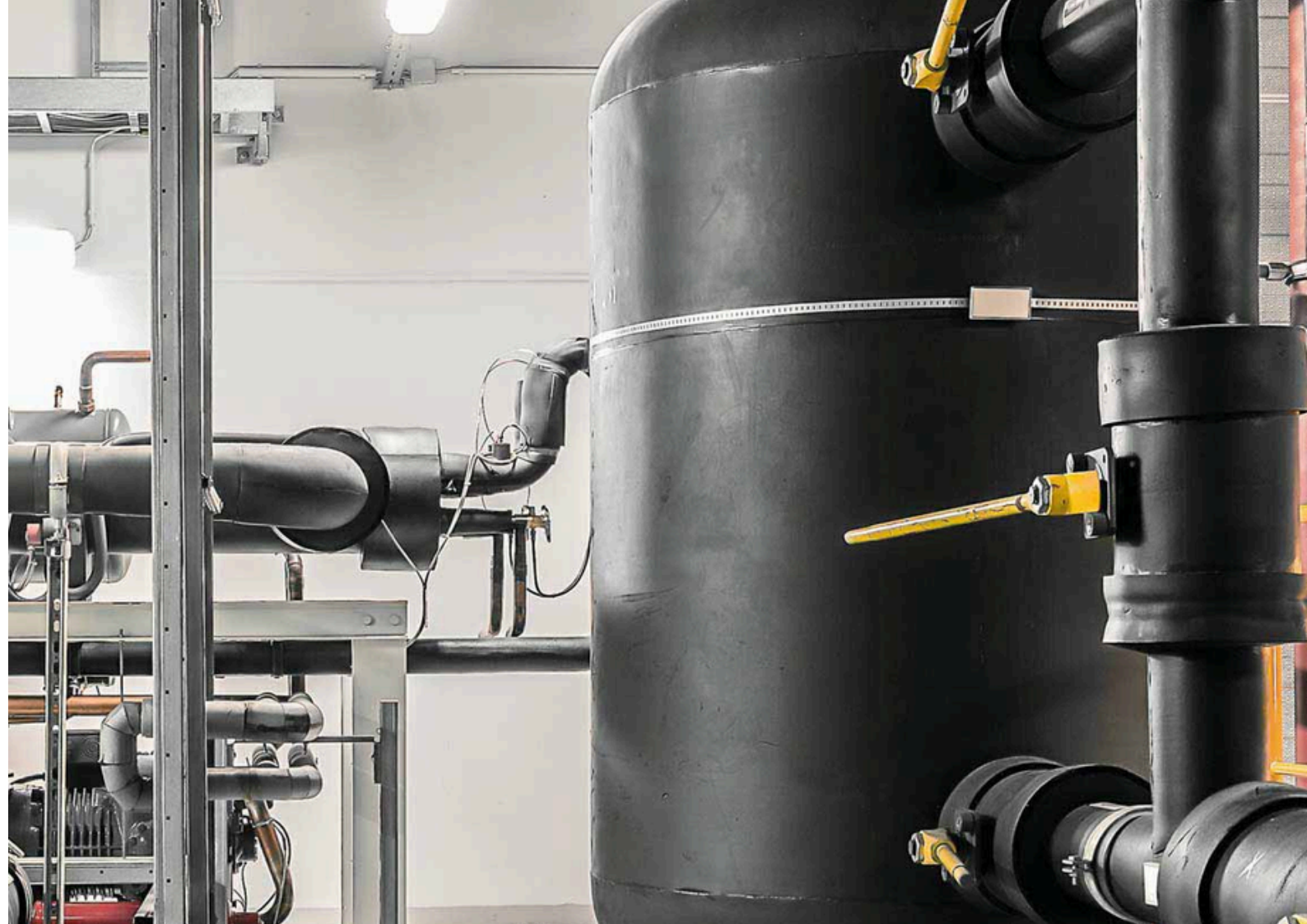




# BITUMINOUS GRAPHITE PAINT

Graphite suspension paints or paint type lubricants is widely used to create a graphite lubricating coating resistant to weathering and elevated operating temperatures. It replaces greases and oils offering clean lubrication without the adhesion of dust, dirt or chips.

Bituminous Paints are alkaline resistant hence it is used for under water structure, weather protecting steel work, waterproofing, wood, concrete and potable water tanks.



# HEAT RESISTANT PAINT (300'C-600'C)

High Temperature Heat Resistant Aluminium Paint.&  
BLACK PAINT

Temperatures up to 600°C. Suitable for direct application to mild steel. This product is ideally suited for commercial and industrial chimney-stacks, general blast furnace applications, furnaces , flues & automobile silencer

The most commonly used heat resistant paint colours include black and silver (also referred to as aluminium).





# CHLORINATED RUBBER PAINT

Chlorinated rubber paint is a general purpose coating that can be used for interior and exterior applications, from road markings to swimming pools and everything in between. It can be painted on a variety of surfaces, including metal, concrete, road surfaces and manhole covers, and dries within a matter of hours.





# ROAD MARKING PAINTS

- Durability. One of the primary characteristics that set thermoplastic road marking paint apart from its alternatives is its exceptional durability.
- High Reflectivity.
- Quick Drying Time.
- Resistance to Fading.
- Adherence to Various Surfaces.
- Cost-Effectiveness.



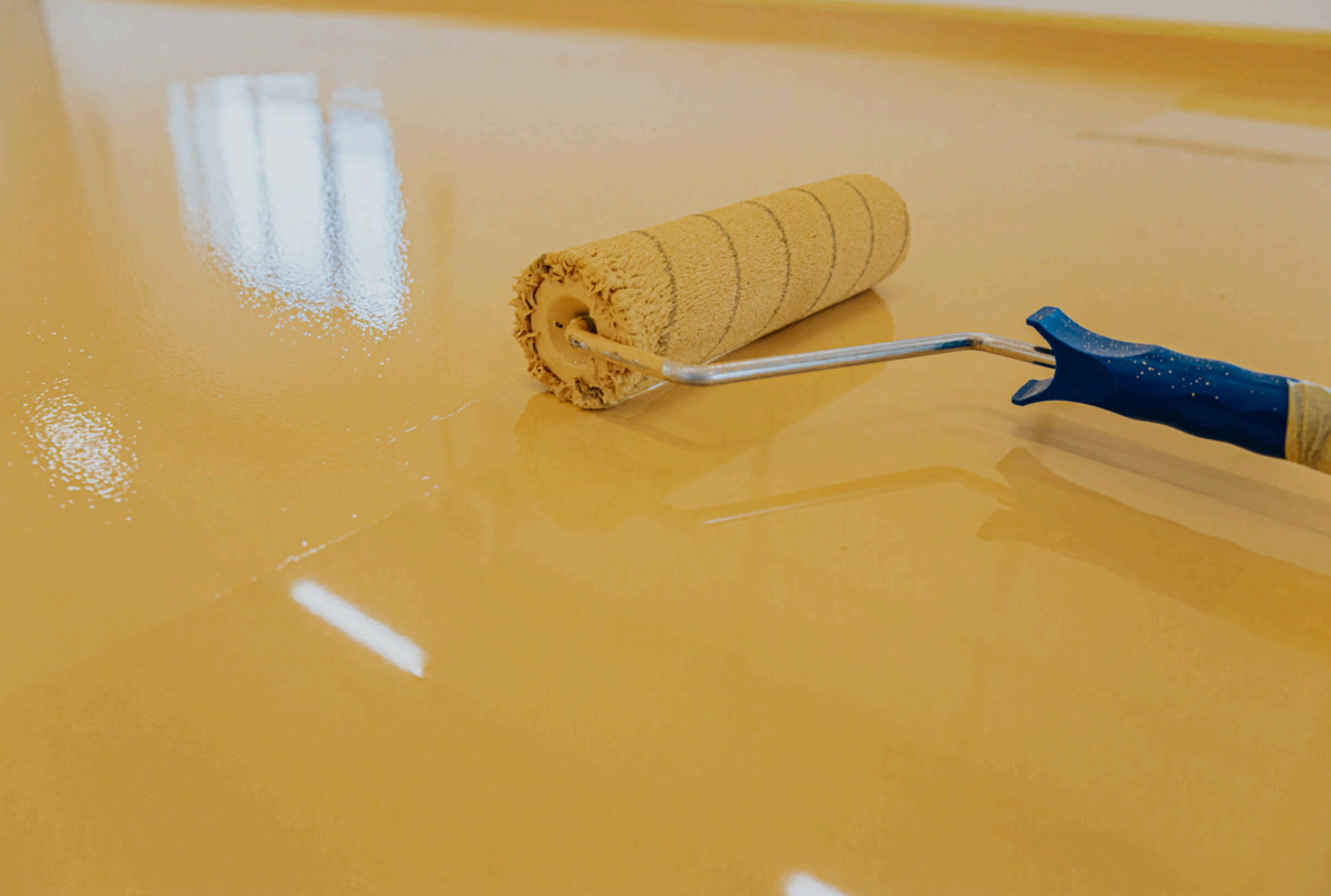


# ANTI SKID PAINT

Anti-skid paint was designed to be applied to surfaces to increase grip – no matter the conditions.

Anti-skid coating durability allows for its employment in areas that experience high volumes of foot traffic, as well as light traffic with rubber wheels.





# POLYURATHANE PAINT (PU)

Polyurethanes are selected for industrial and architectural coating systems as finish coats that are usually applied over primer and intermediate coats that together combine the individual coating features to produce long term protective coating systems.

Polyurethane, mostly in the form of flexible foam, is one of the most popular materials used in home furnishings such as furniture, bedding and carpet underlay. As a cushioning material for upholstered furniture



# **EPOXY PAINT (AVAILABLE IN RAL-SHADES)**



# COAL TAR EPOXY

Coal tar epoxy consists of epoxy resins and coal tar. It is a type of polymer used to coat surfaces and protect them from corrosive environments. It is primarily used on metal and concrete in tough settings like industrial and offshore operations, where chemicals, saltwater and other substances can cause deterioration.





# EPOXY ZINC RICH PRIMER

Epoxy zinc rich primer is widely used in the coating of various steel structures in atmospheric environments. For example: inner walls of oil storage tanks, bridges, containers, iron towers, ship hulls, construction steel structures, etc.

As with all coating applications, surface preparation is critical, and you should read the instructions that come with the primer. In any case, conventional primers are more tolerant to the surface condition that is the zinc-rich.



# EPOXY GLASS FLAKE PAINT

Glassflake coatings have been proven to be most suitable for application where good corrosion resistance and excellent mechanical properties are required. It has been outstanding corrosion resistance to a wide of acids, alkalis, solvents and salt solutions and excellent thermal stability

Glassflake Coating systems are widely used for chemical process equipment in the form in the form of process vessels, storage tanks pipes and ducts





# EPOXY WHITE PRIMER

Epoxy primer is a sealer that produces a good surface finish on applied top coats. A two-part epoxy primer contains zinc phosphate, which acts as a corrosion-inhibiting pigment.

Epoxy primers can be used to waterproof materials that consequently protect the bare metal from oxidation

- Brings the paint color back to neutral.
- Helps in blocking out stains and odors.
- Provides a surface for the paint to stick to.
- Helps in sealing pores in unpainted surfaces like drywall and wood.
- Helps in covering imperfections like patched or repaired parts of the wall.





# EPOXY ZINC PHOSPHATE PRIMER

Zinc Phosphate Primers are steel primers formulated with zinc phosphate, a mineral that offers inhibitive or active corrosion protection to protect the steel substrate from corrosion.


Epoxy zinc phosphate primers contain zinc phosphate, which acts as a corrosion-inhibiting pigment. Epoxy primers are used to waterproof materials that consequently protect the bare metal from oxidation. A dry, very clean surface is needed before applying an epoxy primer.



# ZINC SILICATE PRIMER

Zinc silicate primers are used to protect steel surfaces from corrosion. It is one of the more effective means of sealing critical equipments from moisture, protecting it from rust and corrosion.

We recommended for application on suitably primed steel structure exposed to chemical and industrial environment in refineries, petrochemicals, paper and pulp plants, and fertilizer industries

A low-angle, upward-looking shot of a large red ship's hull. A worker in a grey jumpsuit and blue hard hat stands on a metal lift platform, reaching up to paint the hull. The hull is a vibrant red with several dark rectangular and circular openings. The background is a clear blue sky. The text "Dive into the Ocean of Marine Paints" is overlaid in white serif font.

# Dive into the Ocean of Marine Paints



# **ANTIFOULING PAINTS FOR SHIPS**

Anti-fouling paints are used to coat the underwater surfaces of ships to prevent sealife such as algae and molluscs attaching themselves to the hull, thereby slowing down the ship and increasing fuel consumption.



# ANTIFOULING PAINT FOR FIBER BOATS

The hard and glossy finish of this paint is extremely sturdy. It's best suited for fiber boats and may crack if painted onto other materials. Multiple layers of its thin coats need to be applied by either rolling and tipping or spraying.

In modern times, antifouling paints are formulated with cuprous oxide (or other copper compounds) and/or other biocides—special chemicals which impede growth of barnacles, algae, and marine organisms.



# DECORATIVE PAINTS





# SYNTHETIC HIGH GLOSS ENAMEL

NOC High Gloss Synthetic Enamel are non-mercuric and non-leaded paints.

- Provides rich texture and high gloss finish with excellent surface protection.
- Excellent adhesion.
- Withstand extreme weather conditions.
- Free from lead and mercury.



# **SURFACER CEMENT PRIMER WHITE**

It is specially formulated priming coat, which prevents diffusion of alkali with moisture from base to finish coat. it produces a smooth, non-absorbent surface with good water resisting properties





# RED OXIDE METAL PRIMER

- **GOOD OPACITY.** Gives excellent hiding and protection.
- **GOOD COVERAGE.** It gives good coverage, so you need less material.
- **GOOD ADHESION.** Gives adhesion on all metal surfaces.
- **FLOW AND LEVELLING PROPERTIES.** Produces an extremely smooth finish.



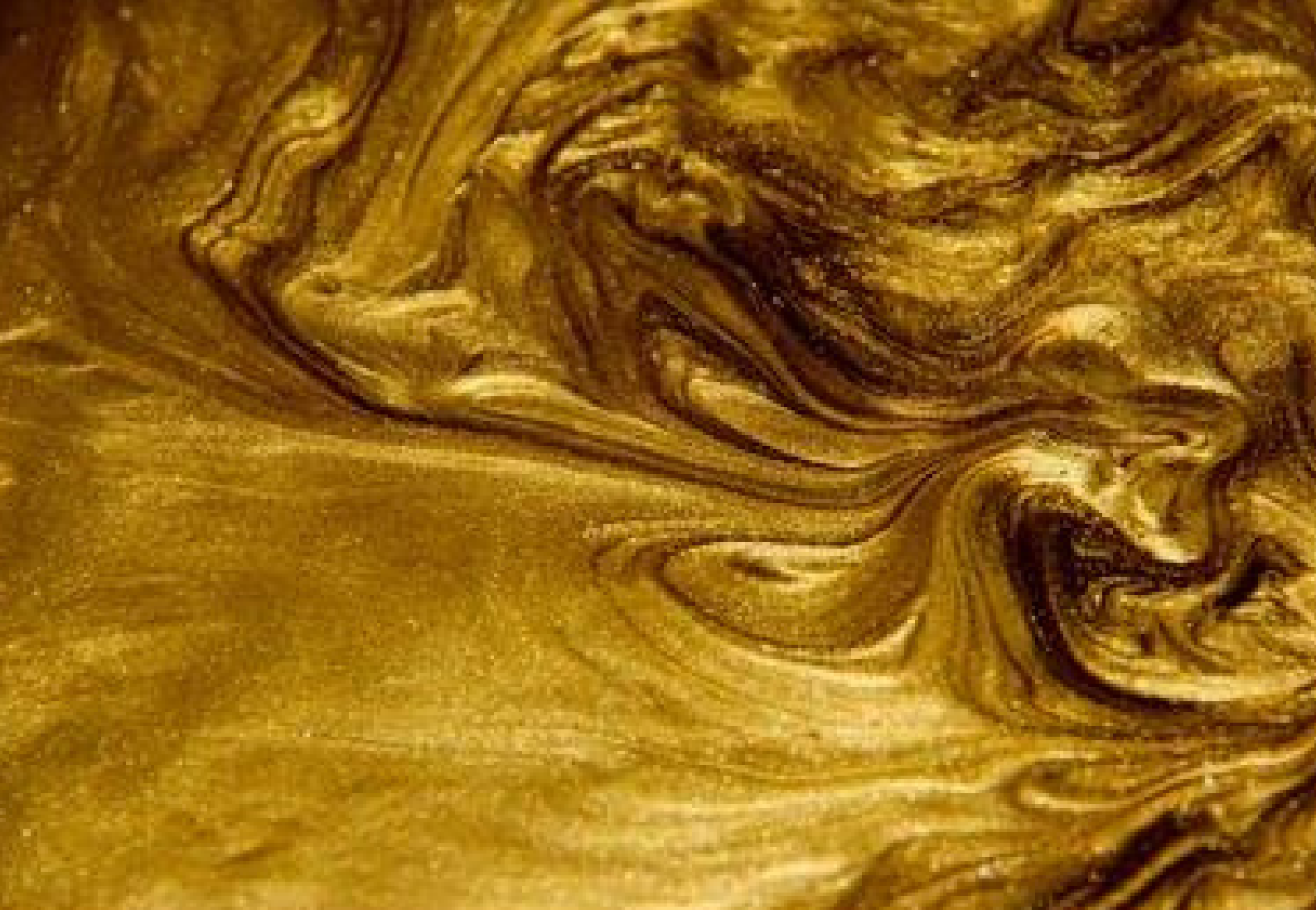
## BLACK/GREEN BOARD PAINT

- Characteristics: High-quality pigments ground in an alkyd medium.
- Advantages: Excellent covering capacity.
- Finish: Matt.
- Application: By brush, roller or spray.
- Thinning: Where necessary and for spray application thin with White Spirit.
- Drying Times: Re-coatable in 16 hours.



# **ALUMINIUM PAINT(SILVER)**

- Maximum Colour and Gloss Retention. Good Hiding and Coverage. Better Durability.
- Flow and Leveling: Satisfactory. Consistency: Smooth & Uniform. Flexibility & Adhesion: Excellent.



# **GOLDEN PAINT**

Golden Paintworks Metallic Paint , interior acrylic paint that is highly pigmented with iridescent mica to produce strong metallic effects. Perfect for any decorative project from up-cycling that treasured furniture piece, to adding some drama to a feature wall, lighted ceiling cap, or crown molding.



# HAMMERTONE FINISH PAINT

Hammer paint or Hammertone as it is commonly referred to as, is a specialist coating with a surface that looks like hammered metal once it is dry. A hammered coating looks as though it has been attacked with a hammer, without damaging the paint or the substrate.

Hammer paint is often used to beautify technical apparatus or as a protective coating. The optical advantage of hammer paint is that surfaces look acceptable even if the underlying surface is not flat and smooth.



## **LUSTER PAINT (SEMI GLOSS)**

Luster paint, as the name suggests, offers a glossy look to the walls. This shine and gloss are attributed to its oily base. The solvent-based paint is ideal for a foyer, living room, or space used for social gatherings due to its subtle elegance and glamour.

Surfaces painted with luster paint are stain-resistant. Luster paints have a high degree of washability and water resistance. The paint forms a firm, highly resistant coating over the surface as it dries. Luster paint prevents the wall from yellowing.





# ACRYLIC EMULSION PAINTS

Acrylic paint dries quickly, is very flexible and waterproof once dry. The paints are water-based, so there's no odor and you can easily clean your hands and painting tools using just soap and water, no need for turpentine or white spirit. They're also incredibly versatile since they adhere to virtually any surface.



# WATER BASE PRIMER

- It shields the surface from stains.
- It covers porous surfaces.
- It improves the adhesion of the surface to the final coat.
- It prevents and eliminates odour.
- It conceals worn-out paint on your furniture.
- Always choose the best primer for your painting needs.





# Interior Emulsion

- Emulsion paints have low volatile organic compound (VOC) levels meaning they do not emit as many chemicals into the air
- Higher sheen
- Durable finish

# Exterior Emulsion



- VALUE FOR MONEY. Does not require any curing thereby saving time and cost during application.
- ANTI-ALGAL. Provides better anti-algal protection than cement paint in dry weather conditions.
- WEATHER GUARD. Excellent resistance to chalking, cracking & peeling as compared to cement paints.
- AVAILABLE SHADES.





# EXTERIOR WATER BASE PRIMER

Exterior Wall Primer is a water based primer that gives a tough film and as a result, helps to provide longer life of total paint system. It does not chalk and can easily be applied on cured fresh plaster. With this exterior primer you will get extra whiteness and excellent opacity on your walls.



# INTERIOR WATER BASED PRIMER

- SUPERIOR WHITENESS. Higher opacity and whiteness makes paint colour stand out with a finished look.
- ALKALI RESISTANCE. Makes walls non-reactive to cement, soaps and other alkaline solutions.
- MOISTURE RESISTANCE.
- INCREASE TOP COAT COVERAGE.



# ISO 9001:2015

CONTACT US

Mobile no. 9820842572  
9820842573

E-mail us  
[amcopaint@gmail.com](mailto:amcopaint@gmail.com)

## AMCO PAINTS

Sec no 821, plot no.39,  
Chintupada,  
Village Mahim,  
Palghar (W)-401404